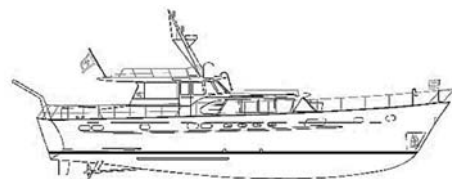


SERENA

Progress Report

Week of 10/02/2020

Location: Rybovich, Riviera, Florida (North Yard)



Summary:

Acting at the request of the owner, a representative from DFD Inc. attended Serena to assist with yacht refit project management. The vessel on hard stand under a tent in the North yard.

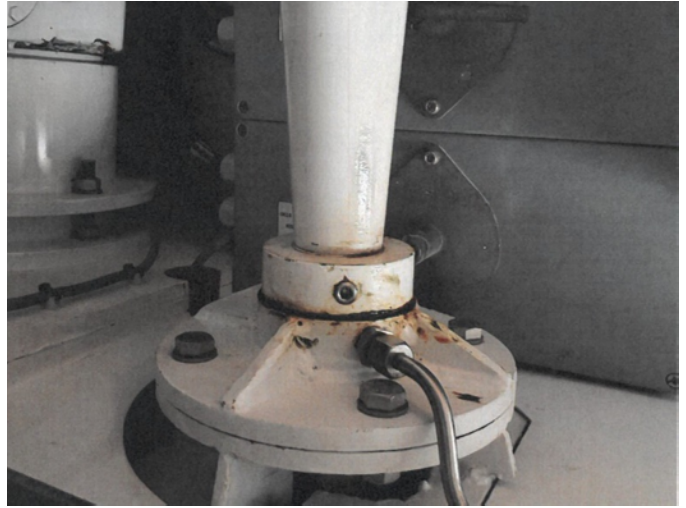
While visually inspecting the rudder posts aboard Serena rust was observed around the rudder posts and bearings. To rectify and remediate the rust; the rudders have been removed for further inspection.

After rudders removed stocks and bearings have been cleaned. Rudders shafts found with deep cavities and pittings. Measurements taken of bearings and stock. Rudder stocks must be repaired.

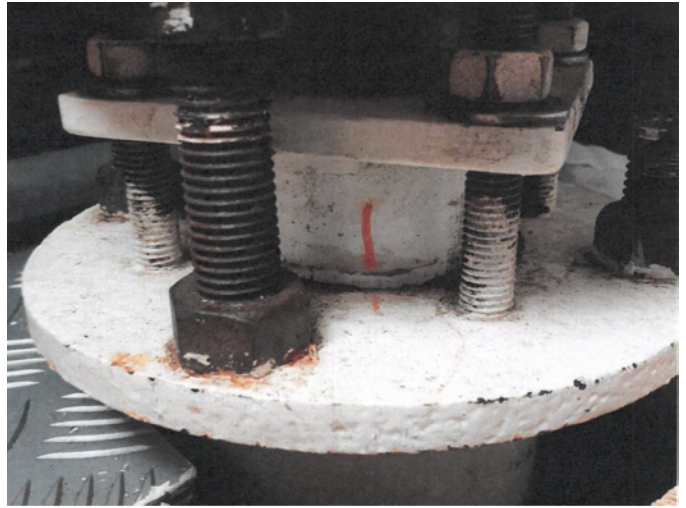
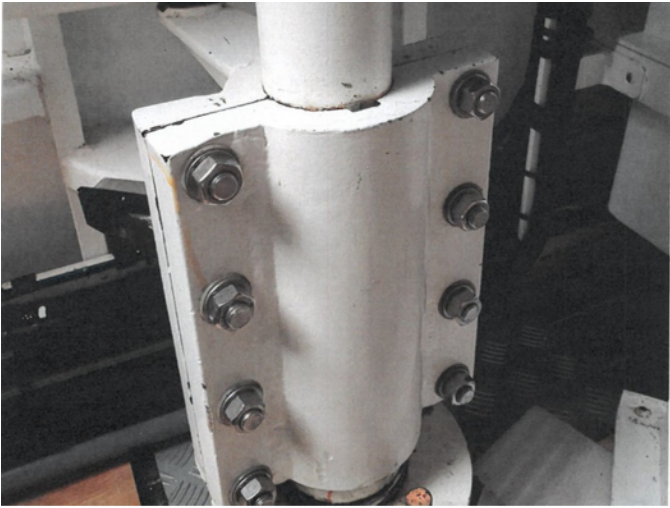
Yard working on preparing estimates for repairs.

RUDDER STOCK & BEARING DIAMETER REPORT					
<p>Rudder Bump Test</p> <p>Port Starboard X= X= Y= Y=</p>	<p>Stabilizer Bump Test</p> <p>Port Starboard X= X= Y= Y=</p>		<p>NAME OF VESSEL: <i>Serena</i></p> <p>WORK ORDER/JOB/TASK: <i>50019-10.03</i></p> <p>PM: <i>Eddie Holm</i> DATE: <i>09/28/20</i></p> <p>TECH: <i>Chuck/J.T./Koran</i></p> <p>INSPECTOR: </p>		
<p>Stock Journal TOP Port</p> <p>1. X = 3.149" 1.Y = 3.150" 2. X = 3.150" 2.Y = 3.151" 3. X = 3.151" 3.Y = 3.151"</p>	<p>Stock Journal MIDDLE Port</p> <p>1. X = 1.Y = 2. X = 2.Y = 3. X = 3.Y =</p>	<p>Stock Journal BOTTOM Port</p> <p>1. X = 3.139" 1.Y = 3.145" 2. X = 3.145" 2.Y = 3.147" 3. X = 3.145" 3.Y = 3.143"</p>	<p>Stock Journal TOP Starboard</p> <p>1. X = 3.150" 1.Y = 3.150" 2. X = 3.151" 2.Y = 3.152" 3. X = 3.151" 3.Y = 3.150"</p>	<p>Stock Journal MIDDLE Starboard</p> <p>1. X = 1.Y = 2. X = 2.Y = 3. X = 3.Y =</p>	<p>Stock Journal (Bottom) Starboard</p> <p>1. X = 3.146" 1.Y = 3.142" 2. X = 3.141" 2.Y = 3.146" 3. X = 3.146" 3.Y = 3.146"</p>
<p>Bearing Bore TOP Port</p> <p>1. X = 3.157" 1.Y = 3.157" 2. X = 3.156" 2.Y = 3.155" 3. X = 3.160" 3.Y = 3.156"</p>	<p>Bearing Bore MIDDLE Port</p> <p>1. X = 1.Y = 2. X = 2.Y = 3. X = 3.Y =</p>	<p>Bearing Bore BOTTOM Port</p> <p>1. X = 3.180" 1.Y = 3.173" 2. X = 3.179" 2.Y = 3.170" 3. X = 3.180" 3.Y = 3.166"</p>	<p>Bearing Bore TOP Starboard</p> <p>1. X = 3.159" 1.Y = 3.158" 2. X = 3.158" 2.Y = 3.157" 3. X = 3.160" 3.Y = 3.156"</p>	<p>Bearing Bore MIDDLE Starboard</p> <p>1. X = 1.Y = 2. X = 2.Y = 3. X = 3.Y =</p>	<p>Bearing Bore BOTTOM Starboard</p> <p>1. X = 3.195" 1.Y = 3.185" 2. X = 3.205" 2.Y = 3.178" 3. X = 3.217" 3.Y = 3.170"</p>

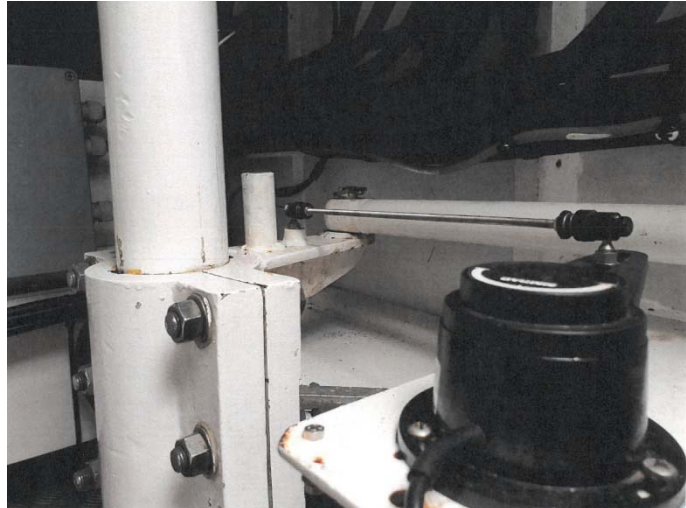
Pictures:



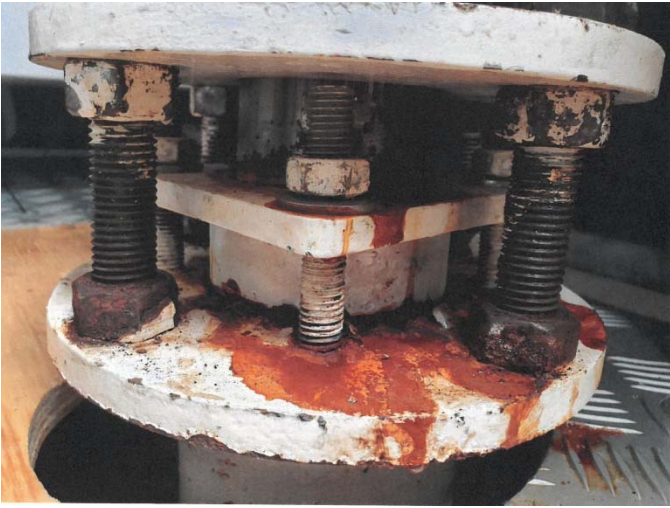
Rudders removal



Rudders removal



Rudders removal



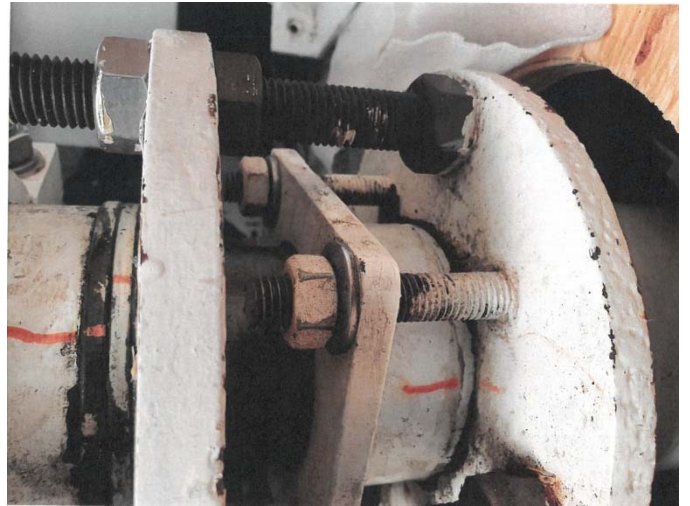
Rudders removal



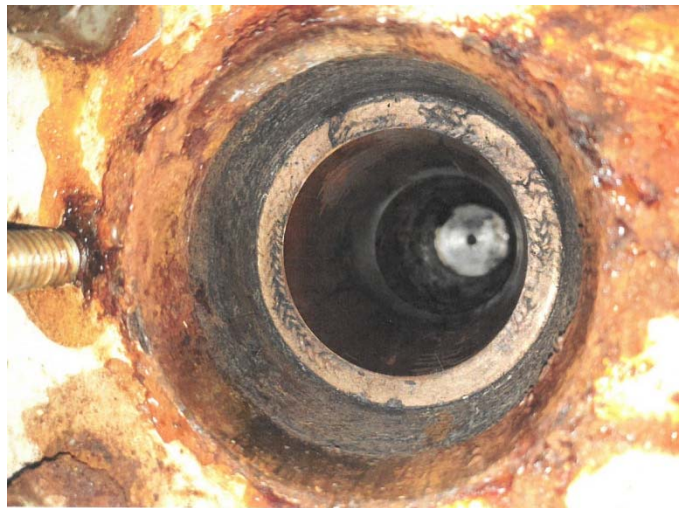
Rudders removal



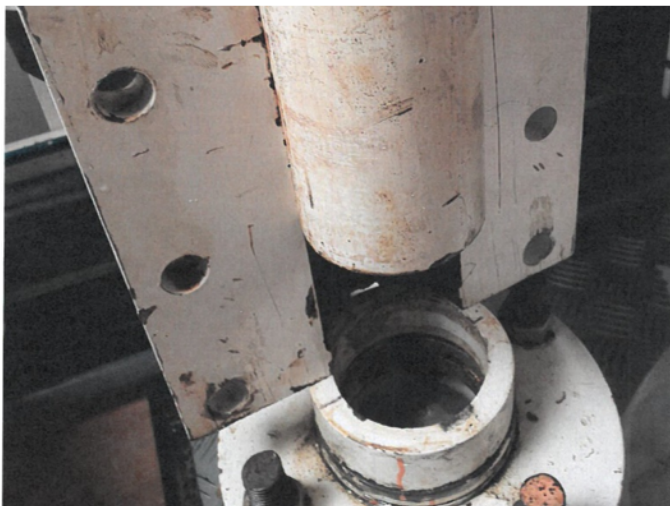
Rudders removal



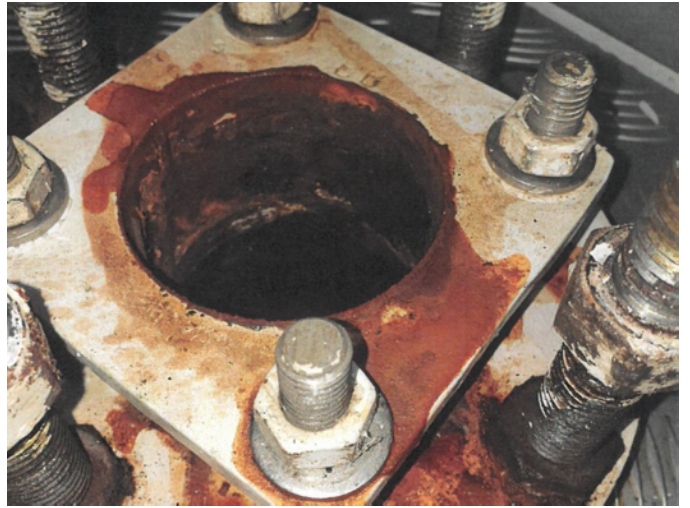
Rudders removal



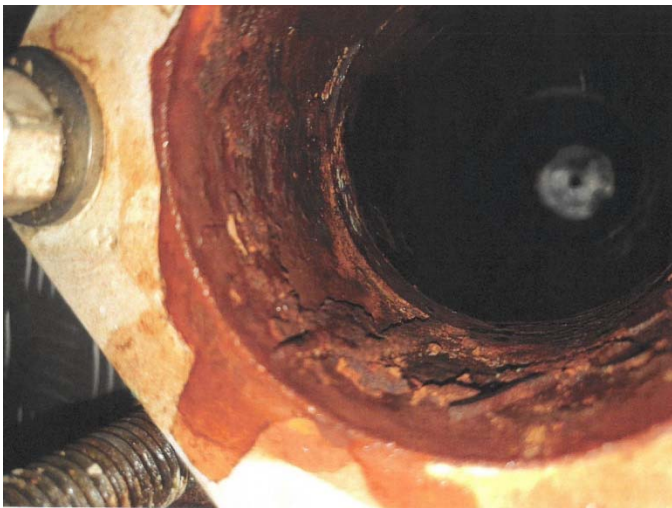
Rudders removal



Rudders removal



Rudders removal



Rudders removal



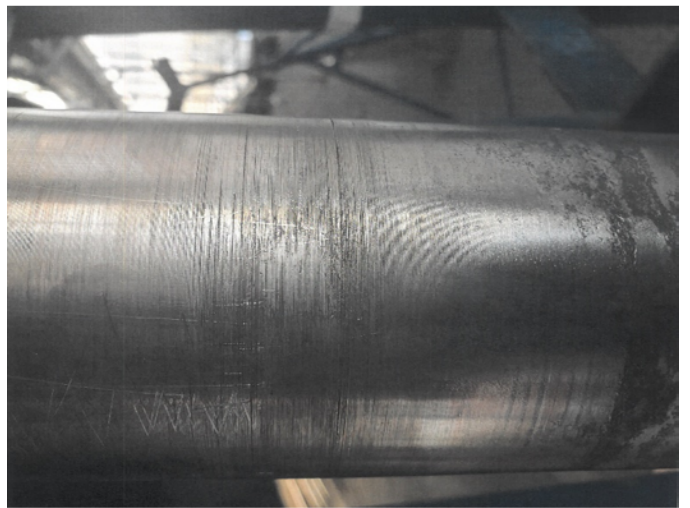
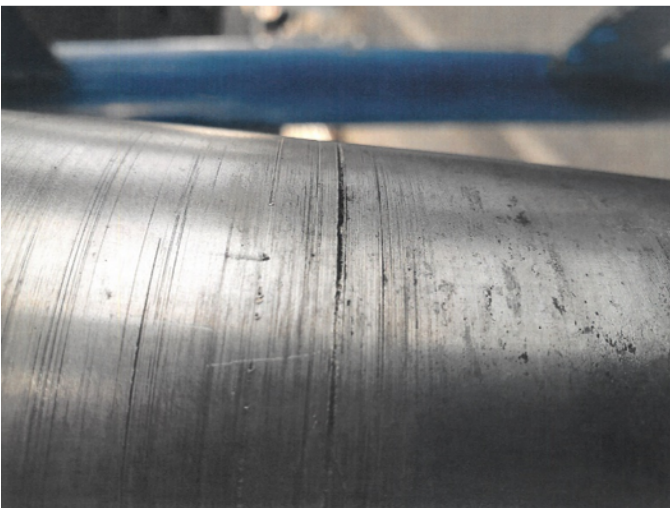
Rudders removal



Rudder stocks pitting



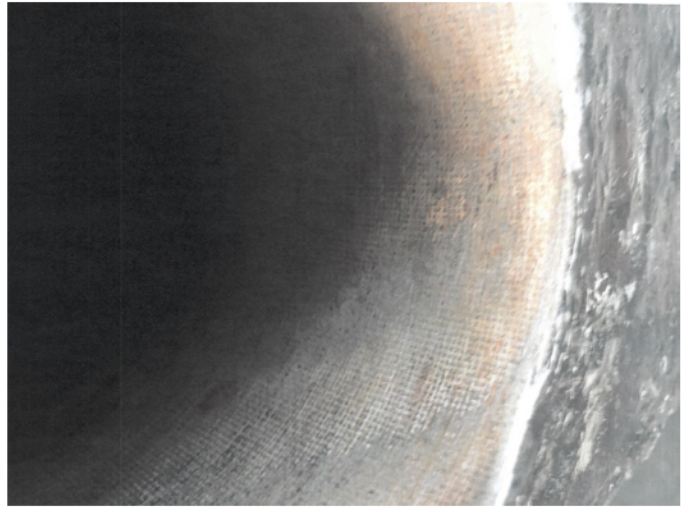
Rudder stocks pitting



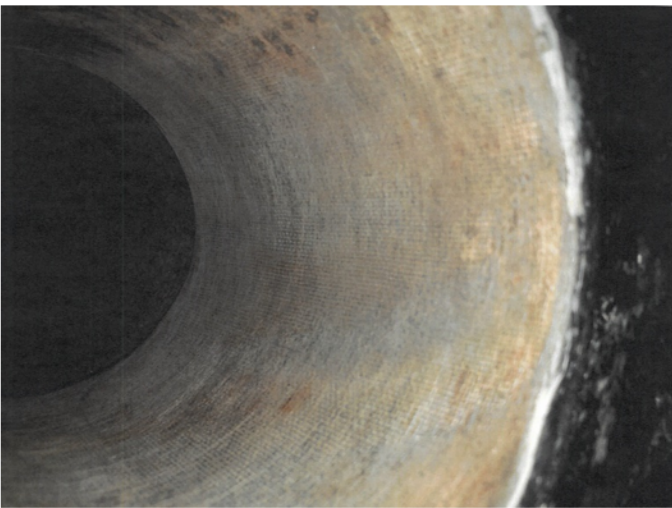
Rudder stocks pitting



Rudder stocks pitting



Rudder stocks pitting



Rudder stocks pitting

This report is respectfully submitted without prejudice for the benefit of whom it may concern.

V. Ovodouskiy

