




Serena

WELCOME ABOARD!

Serena

We wish to make your stay relaxing, comfortable, and above all, safe. The following provides some useful tips on how to best enjoy your stay aboard.

The Crew & Owners of M/Y Serena



BEFORE BOARDING

When you first arrive, it's polite to ask permission to board with a friendly "Hello! May I come aboard?" This rule is as old as the sea itself and still holds true today.

NO SHOES ONBOARD

- ❖ Please remove your shoes before entering the dinghy or stepping on the boarding stairs. The crew will provide a basket at the end of the boarding stairs.
- ❖ Shoes worn on land can carry grease and dirt that will ruin our carefully maintained decks and floors.
- ❖ Please do not wear black soled, hard-soled or high-heeled footwear onboard at any time.
- ❖ If you prefer not to be barefoot onboard, please reserve one pair of light-colored, soft-soled boat shoes for use only on board.

INTERNET ACCESS ONBOARD

Login by selecting "Serena AP" from the list of networks. Enter the password "5105791937"

TREAT SERENA AS YOU WOULD YOUR OWN HOME

A simple rule to follow. We want you to feel at home and we appreciate the care you take with our beloved *Serena*.



KEEP THE CREW INFORMED

Being onboard is fun, but every activity and meal requires advance preparation by our crew. If you want to invite guests aboard for cocktails or a meal, be sure to clear it with the captain first so the crew and our chef will be prepared. Also, please let the crew know about any changes of plans, and alert them immediately in the event of spills, equipment breakage, or injury.

SUNSCREEN

Sunscreens are provided onboard for your convenience. Please do not use spray sunscreens or sunscreen with oil as they damage the teak, woodwork, fiberglass, and cushions on the vessel.

SEASICKNESS

To avoid seasickness, don't stay down below unless absolutely necessary. While on deck or in the main salon, look at the horizon if you feel queasy. If you are prone to seasickness, be sure to bring an ample supply of anti-nausea medication on board, and begin taking them before you arrive. The crew is happy to provide ginger ale and salty snacks that may also help.

YOUR CABIN

- ✿ While underway and at anchor items will move around. Please take care not to put anything on your countertop that could scratch the surface or fall over, e.g. watches, perfume bottles, jewelry, etc. Please place these items in a secure place.
- ✿ Please do not eat or drink in your cabin, except for water.
- ✿ Give the crew a chance to make up the beds, do the laundry and service systems while you spend time outside your cabin.
- ✿ Stay in the cabin assigned to you by the chief stewardess. This avoids "tension upon arrival" if all guests cooperate.
- ✿ Please do not open the portholes or hatches in the cabins and do not shut the seacocks in the head (bathroom), if you do not want your stateroom bed full of sea water during a choppy seaway!



AIR CONDITIONING & HEATING

The vessel has both air conditioning and heating onboard. Each cabin has a control box that adjusts the fan speed and temperature for your comfort. Please ask the crew if assistance is required.

LIGHTS AND OUTLETS

The sockets in your cabins are EU 220 volt. Please contact the crew if you need an adapter.

220v hairdryers are provided for your use in each cabin. 220v hair curlers and irons are available on request.

SHOWERS

- ✿ Body wash, shampoo, conditioner, and bar soap are provided in each cabin for your convenience. Other toiletries are available on request.
- ✿ After swimming, please rinse off at the fresh water shower on the bow before entering the interior of the vessel.
- ✿ Please dry off before entering the pilot house and salon as the wooden floor and steps down to your cabin can be very slippery.

WATER CONSUMPTION

The vessel has a desalinater (water maker) onboard that filters the salt water; however please take care not to waste water.

TOILETS ("HEADS")

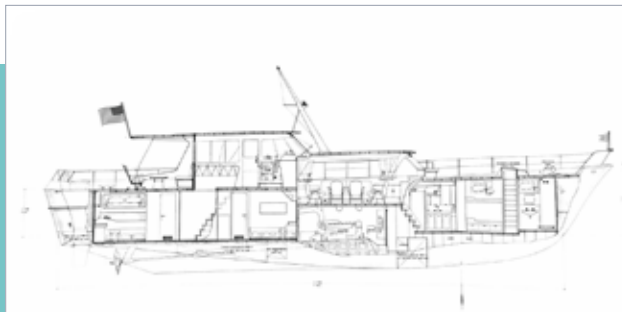
- ✿ Please do not flush anything that hasn't come out of your body and use as little toilet paper as possible. Although our toilets are state-of-the-art, too much toilet paper is the most common cause of clogging.
- ✿ Please use the waste bin in the cabinet under the sink for anything else, such as paper towels, kleenex, facial wipes, tampons, hair, dental floss, etc.
- ✿ Before you use the toilet, please press the button on the left to fill the bowl with water and primes the pump. Then flush the toilet by pushing the button on the right.
- ✿ If for any reason the toilet doesn't seem to be flushing properly and/or the water level appears to be rising too high, do not press any buttons. Please ask one of the crew for assistance – don't worry or be embarrassed, we've seen it all before!!

LAUNDRY & CABIN ETIQUETTE

The vessel has limited laundry capabilities. Laundry will be picked up in your cabin and returned the next day. If you have specific requirements please speak with the chief stewardess. Please wash underwear and other dainties yourself in the washbasin of your head, and hang up in the shower stall to dry. Never leave things on the floor to be picked up, and try to keep all make-up and creams inside the bathroom. Dry cleaning is rarely an available option, as the vessel will most likely be on the move from port to port.

TECHNICAL SPECS

- Built In: 1964
- Builder: Feadship
- Refit: 2011 & 2021
- Yard: Feadship
- Length overall: 22.50 m / 73'10"
- Beam overall: 5.10 m / 16'9"
- Draft (loaded): 1.66 m / 5'5"
- Tonnage: 88 gross / 73.8 net
- Fuel capacity: 5,500 litres / 1,453 US Gallons
- Fresh water capacity: 2,300 litres / 608 US Gallons
- Naval architect: Feadship De Voogt Naval Architects
- Original Exterior and Interior Styling: Carlo Riva
- Refit Interior design: Feadship "Homage to Carlo Riva"
- Main engines: 2x Luger L1276A2.1 380hp Model 1276
- Hull No./IMO No.: 583/DLZ76181C464
- USCG Registration No.: 1285758
- Call Sign: WDK2720
- MMSI No.: 36803220





FIRE SAFETY PLAN

- ☼ Smoke and heat detectors monitor all internal compartments. A number and the compartment name are indicated on the fire panel on board.
- ☼ The following alarms or calls can be heard in an emergency:
 - ☼ The General Alarm Signal: a distinctive sound that can be heard throughout the vessel. There are two sounds.
 - ☼ Fire Alarm: Continuous sounding of the ALARM tone
 - ☼ General Emergency Alarm: Pulsing short blasts of the ALARM tone
- ☼ Guests: Take your life jacket and proceed to the muster station as directed.
- ☼ Crew: Take your lifejacket and proceed to the wheelhouse
- ☼ Abandon Ship: a verbal order given by the ship master only

SAFETY EQUIPMENT

Please fold out this page and familiarize yourself with location of important safety equipment in case of emergency.

SAFETY

The boat is equipped according to the safety standards required by the current applicable maritime laws. This equipment includes life jackets (greater than or equal to the maximum number of persons onboard), two life rafts, several fire extinguishers, both fixed and portable and fire hoses.

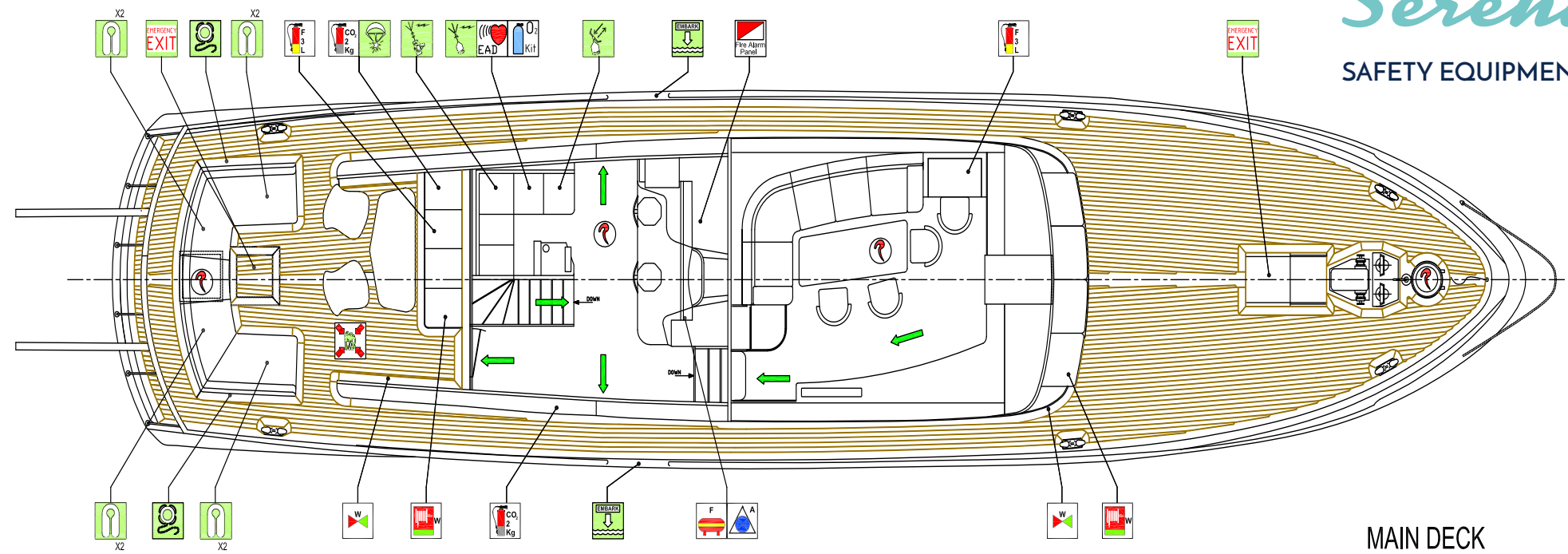
This booklet covers the essentials of safety procedures aboard *Serena*. For deeper understanding of the issues and techniques regarding safety, please do not hesitate to consult with the captain, who will be pleased to provide further information.



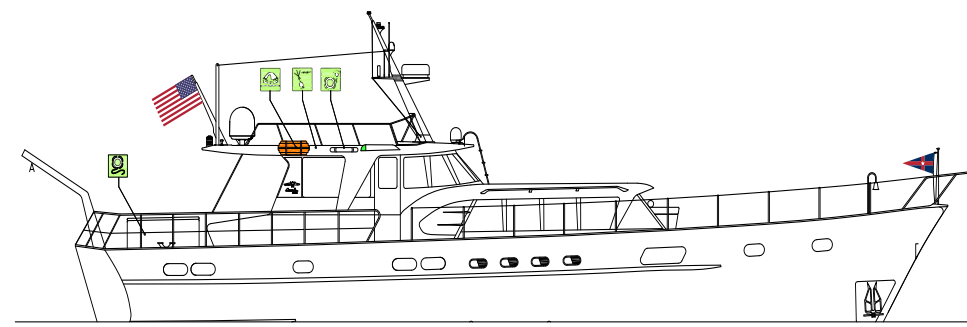
FIRE SAFETY PLAN (CONTINUED)

- ☼ Please listen closely to the safety briefing as your life may depend on it.
- ☼ Safety is the prime responsibility for the captain and crew, and they take it very seriously. The safety briefing and boat tour will include the locations of first aid kits, life jackets and life rafts, as required by insurance and maritime laws.
- ☼ In the event that a person goes overboard, the captain will explain your duties, which may include keeping your eyes trained on the person in the water so that the boat can return to pick them up, or throwing lifesaving gear and flotation devices into the water. The crew will also review what to do if you fall overboard.
- ☼ While on deck, always remember to keep one hand for the vessel, and one hand for yourself.
- ☼ Please watch your step at all times, so you do not trip or slip.
- ☼ Please remember that the decks and dinghy can get very slippery when wet.
- ☼ Do not jump off the boat into the water until the boat is safely anchored and the engines are off, and the “OK” has been given by the captain.
- ☼ No smoking is permitted on the interior of the vessel at any time; if you must smoke at all, please do so on the stern and downwind side of the vessel. Ask for an ashtray beforehand, and do not allow ashes or butts to fall on the decks.
- ☼ Please inform a crew member if you’re planning to go for a swim or leave the vessel.
- ☼ Children must wear lifejackets and be with a supervising adult while the vessel is moving. As an adult, wear a lifejacket if you get seasick while the vessel is in motion.
- ☼ Adult life vests and fire extinguishers are located in the closets in each cabin. If a child-size life jacket is required, please ask the crew.
- ☼ Please notify the crew immediately if you smell smoke.

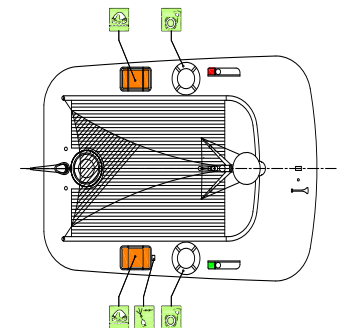
- | | | | | | |
|--|------------------------------------|----|--|--|---|
| | Oxygen Kit | 1 | | Fire Alarm Panel | 2 |
| | External Auto. Defibrillator | 1 | | Fire Plan | 2 |
| | First Aid Kit | 1 | | CO2 Fire Extinguisher 2kg | 2 |
| | Emergency Exit | 3 | | CO2 Fire Extinguisher 5kg | 2 |
| | Muster Point | 1 | | Foam Fire Extinguisher 3L | 6 |
| | EPIRB | 1 | | Foam Fire Extinguisher 9L | 1 |
| | Rocket Parachute Flare Sets | 1 | | FM200 Release Station | 2 |
| | Two Way VHF Radio w/ Spare Battery | 2 | | Area with Smoke Detectors | |
| | SART (Radar Transponder) | 1 | | Area with Heat Detectors | |
| | 8 Person Inflatable Liferaft | 2 | | Fire Pump | 1 |
| | Embarkation Station | 2 | | Bilge Pump | 1 |
| | Lifebuoy With Light | 2 | | Ventilation shutoff Accommodation and Service Spaces | 1 |
| | Lifebuoy With line | 2 | | Fire Damper Machinery Spaces | 1 |
| | Lifejacket | 26 | | Axe | 1 |
| | Childs Lifejacket | 2 | | Hose Box With Spray/Jet Nozzle | 3 |
| | Thermal Protective Aid | 3 | | Fire Blanket | 1 |
| | Flashlight | 3 | | Fire Main Section Valve | 3 |
- Primary Escape Route
 Watertight Bulkhead



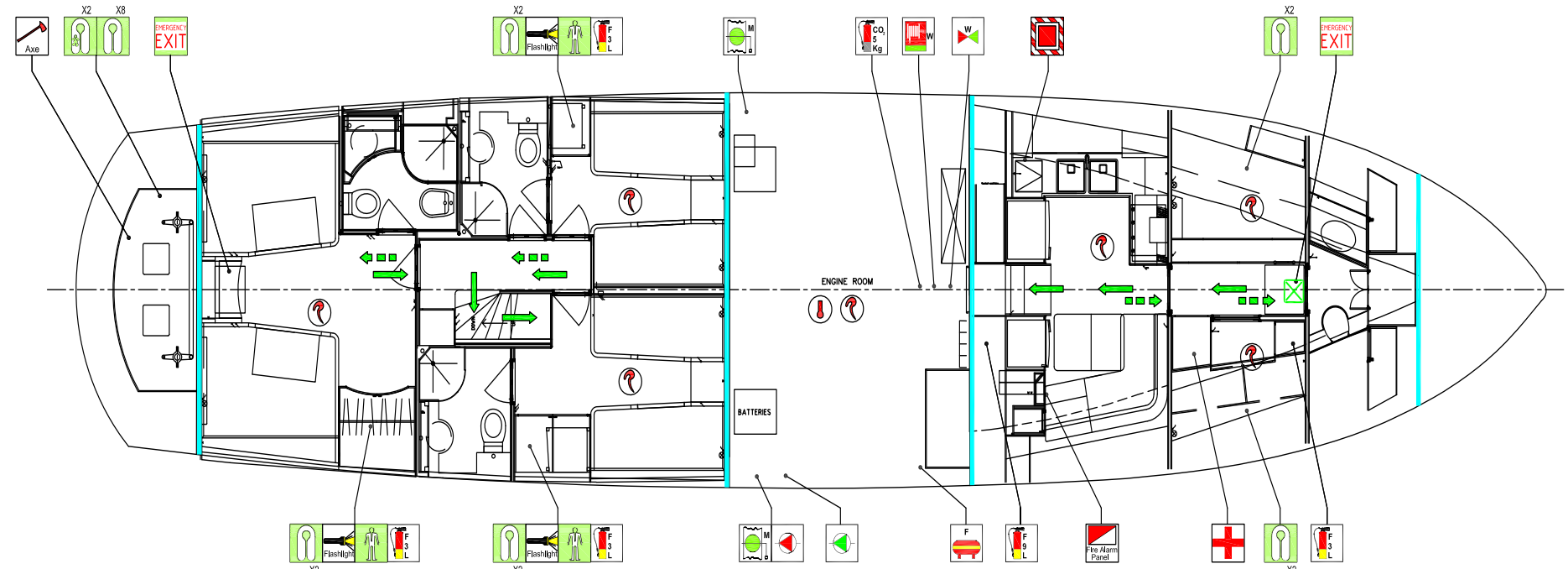
MAIN DECK



PROFILE



SUN DECK



LOWER DECK

CREW RULES

The crew are there to serve you and to ensure you have a safe, comfortable, and entertaining trip. Generally, their goal is to provide for every need, but please be mindful of their overall responsibilities onboard, which often require long days and nights on duty. If you have any questions, please speak to the chief stewardess, who will be happy to guide and advise you.

CREW AREAS

Please honor the crew's privacy, and stay clear of private crew areas forward on the lower deck unless invited. The galley (kitchen) is definitely off limits unless the chef has invited you. If you need a snack or a beverage in between meal times, please let a crew member know and they will be provided.

DON'T DO ANYTHING ILLEGAL

We have a zero tolerance policy on board *Serena* for illegal activities, including the possession or use of illegal substances. The penalty for illegal drugs on board is much stricter than our guests may realize, as the vessel will be seized by authorities, the captain will lose his license, and in most countries, the offending parties will be charged and taken to jail. Because of the gravity of these penalties, if a guest harasses anyone aboard *Serena* or engages in any illegal activity including drug possession, the captain will escort them off the boat immediately.

DON'T TAKE MATTERS INTO YOUR OWN HANDS

The correct way to deal with any problems is via the captain. Do not take matters into your own hands. If you have a problem with anything or anyone aboard, please have a private conversation with the captain so the matter can be quickly and safely resolved.

GUEST BOOK

Serena has a guest book, and we would love it if you could sign it and add a few notes about your experience aboard.

FISHING EQUIPMENT

Fishing equipment is available for use. Please ask a crew member concerning the details.

FINE ART WORKS

Throughout the vessel, artwork is displayed. For further information regarding the artwork, please ask a crew member for the vessel's art catalog.

PACKING TIPS

- ✿ Pack light as storage space aboard is limited.
- ✿ Attire aboard is generally casual, so swimsuits, shorts, hats, and beachwear are appropriate at all times, except for special events planned in advance.
- ✿ Please bring soft style luggage that can be folded and stowed in the hold during your stay on board.
- ✿ Evenings aboard can be cool or windy, so please bring a sweater or light jacket.
- ✿ In the unlikely event your luggage is delayed in transit to *Serena*, please pack important medications and toiletries in your carry-on bag. A swimsuit or change of clothes is also a good idea. The captain will arrange for the delivery of your luggage to a convenient pick-up location.

EMERGENCY CONTACT

- ✿ International satellite phone service is available onboard. Vessel phone contact numbers are available prior to your arrival to give to your family members. Please feel free to contact the captain in order to receive the vessel phone numbers.
- ✿ We recommend you call your cell phone carrier and authorize international calling.
- ✿ The *Serena* captain may be contacted at: captain@myserena.org

M/Y SERENA - HISTORY

The steel-hulled 74-foot motor yacht *Serena* was launched in 1964 bearing two of the most illustrious names in the maritime industry - designed by the Carlo Riva of Sarnico, Italy, and built in Aalsmeer, the Netherlands by the De Vries Brothers, who would later be known as Feadship. *Serena* was the fourth boat in the Caravelle series of steel motor yachts designed by Carlo Riva and built by the De Vries Brothers. The collaboration between these two family boatyards was initiated by Riva, who was already well-known for sexy runabouts and wanted to offer a product to the yachting market. For the De Vries, Riva's approach was irresistible on two counts: it gave the Dutch builder a foothold in the Italian market and Riva was willing to assume all the risk on the first boats.

Under Riva's close supervision, the Caravelle models evolved over the 1961-1965 period. *Serena*, Hull No. 4 was the first of the Caravelle Series II, which at 73'10" was slightly longer than earlier models. After a 1964 showing at the Amsterdam Boat Show bearing the name *Caravelle*, the boat was purchased by German yachtsman Freiederich W. Stukenbrocker to cruise on the French Riviera. He named her *Serena*.

Six decades and several owners later, *Serena* has been restored to mint condition by Rembert Berg, the immediate previous owner of *Serena*, who underwrote a full-scale restoration of *Serena* in 2010 by the original builders, Feadship at Makkum, that totaled 43,000-man hours.

Fifty-four years after her launch in the Netherlands, *Serena* left Europe on a ship bound for the United States. It was 2018 and *Serena* was on her way to becoming mothership of a small fleet of historic sailing yachts owned by Matt Brooks and his wife, Pam Rorke Levy.

Serena's pedigree - one of just seven yachts designed for Feadship by Carlo Riva - a sleek mid-century styling were a natural complement to the fleet's flagship *Dorade*, a 1930 Sparkman & Stephens yawl, and *Lucie*, a 1931 Six-Metre designed by Clinton Crane.

Serena was acquired after a seven-year search that took Brooks and Levy to boatyards across the U.S. and throughout Europe. They were looking for a motor yacht with an illustrious and colorful history, and considered boats from as far back as the late 1800s.

"We looked at gentleman's yachts pressed into military service during WWII, ferrying troops off the beaches at Dunkirk," says Levy. "We looked at an Edwardian steamship up in Seattle, a workboat on the River Clyde in Scotland, and high-powered commuters built for Wall Street tycoons making the trip to Manhattan from Long Island. And many, many more, probably a hundred in all."

Serena is honored as the flagship for the Feadship Heritage Fleet. For further information regarding the Feadship Heritage Fleet, see: feadshipheritagefleet.nl. Additional history and information about *Serena* may be found at the *Serena* web site: myserena.org



Amsterdam Boat Show, 1964

M/Y SERENA - 2020-2021 REFIT

A full decade after her refit at the Feadship yard where she was built in the Netherlands, *Serena* deserved to be treated as a small class-certified ship. In August, 2020, the yacht arrived in West Palm Beach at the Rybovich yard, an official Feadship service center, and began a 10-year survey and refit.

Our goal was to restore *Serena* to an exceptional level and maintain her “Certified Feadship” distinction, particularly as the Flagship for the Feadship Heritage Fleet. At the same time, we wanted to introduce modern functionality in her systems and safety equipment to further improve performance, handling, and comfort.

Refit and upgrades included:

- ✦ Electrical system upgraded with a new shore-power frequency converter for increased convenience and power service, and a clean shore-power capability anywhere in the world. Generators now allow seamless transfer of shore power to ship’s power.
- ✦ All new batteries to provide extra power for new water makers, bow thruster, ventilation system, stabilizer and water-heater systems
- ✦ Refit included inspection, remachining, or replacement as needed of all running gear (props, shafts, bearings, etc.), new rudders and rudder shafts, fuel filtration, hull plating, all tankage (gray/black/fresh/fuel), main engines, bilge and fire pumps, and fire system.
- ✦ New ventilation system designed to increase air-flow in engine room; demister system added to capture salt spray and mist to prevent rust.
- ✦ Bow thruster installed; forward storage compartments redesigned.
- ✦ Bridge console remodeled for new navigation/communications equipment while maintaining original look.





IMPORTANT NUMBERS

Contact Information: Phone: 401.578.6059
Email: captain@myserena.org